



# Menu

## *Fake Factory Treatments*



### Nails

Full Set Acrylic/Gel with 1 colour gel polish, €40

Full Set Acrylic/Gel with 2+ colour gel polish, €45

Infills Acrylic or Gel, (max. 1 colour) €22

Infills Acrylic or Gel (2+ colours) €25

Nail Fix, €4/nail (if broken at infill appointment)

Decoration and stones, €1.50/nail

Nail Art and Swarovskis, €2.50/nail

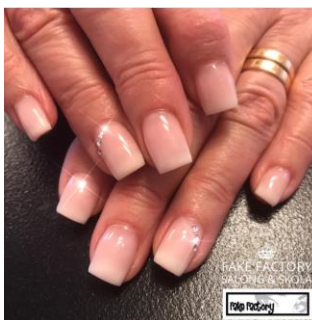


### Gel Polish

Cleanse, File and polish with Gel polish, €20

Classic manicure with Gel polish, €25

SPA manicure with Gel polish, €30



### Manicure & Pedicure

Classic Manicure, basic, incl nail polish, €15

SPA Manicure, incl nail polish, €25

Toe Nails - Cleanse, File and Gel Polish €30



### Lashes – Classic Singles (extension)

Full set Classic lashes, 1,5 hours (appr.) €50

Small Infill, Classic/singles, 1 hour €30

Large Infill, Classic/singles 1,5 hour €40



### Lashes – Volume (extension)

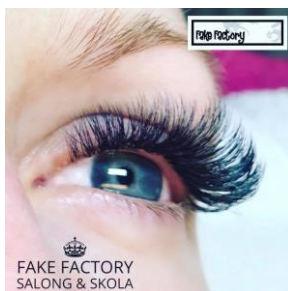
Full set Hollywood Volume, 2 hours (appr.) €70

Full set Mega Volume, 2,5 – 3 hours, €85

Small Infill Volume , 1 hour €45

Large Infill Volume, 1,5 hour €55

Mega Infill Volume, 2 hours €65



### Brows & Lashes, natural

Brow tinting, €8

Brow shaping (wax or/and plucking) €8

Brow shape and tint, €12

Lash tint, €10

Lash lift & Tint (a lash perm for a durable curl on your natural lashes), €35

**For contact, please send an SMS or call: (+356) 77 022 371**  
**email: [info@fakefactory.se](mailto:info@fakefactory.se)**

I am trained and Certified within the following treatments:

- Nail enhancements (Acrylic and Gels)
- Manicure and Gel polish
- Lash Extensions (Single/Classic, Hollywood Volume and Mega Volume)
- Lash and Brow styling and tinting
- Lash Lift, Ellebana One Shot Lash Lift
- Microblading, Manual system with a needle-pen
- Waxing
- Spray Tanning

**Please Note;**

At this moment, I accept cash payments only.

Cancellation of treatments should be given notice in advance, 24 hours before appointment. By PM, SMS /calling or send by e-mail.

I perform treatments on all clients of all ages.

Do you have allergies, a cronical condition or taking strong medicine, please give notice in advance so that we can give you the proper care.

**I am looking forward to helping you!**

All the Best / Asa

Asa Wollertsen

Fake Factory Malta